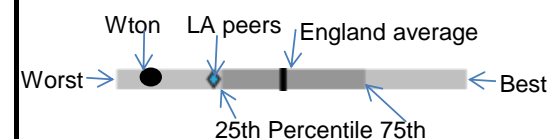


**Significance Key :**

- Significantly better than England average
- Not significantly different from England average
- Significantly worse than England average
- Significance cannot be calculated

**Chart Key:**

ASCOF all data is for 2012-13 updated at 19/8/2014	Wton Number	Wton Value	Eng Median Value	Eng Worst	England Range	Eng Best
1A - Social care-related quality of life (points out of 24)	n/a	19.4	18.9	17.7		20.5
1B - % of people who use services who have control over their daily life	n/a	77.6	76.5	64.4		90.9
1C(1) - % of people using social care who receive self-directed support	2140	73.4	66.1	25.4		138.1
1C(2) - % of people using social care who receive direct payments	970	23.3	18.6	6.1		47.1
1D Carer-reported quality of life (placeholder)						
1E - % of adults with learning disabilities in paid employment	40	2.2	6.6	0.9		23.1
1F - % of adults in contact with secondary mental health services in paid employment	n/a	3.9	5.8	1.6		17.5
1G - % of adults with learning disabilities who live in their own home or with their family	530	69.0	75.4	47.7		94.5
1H - % of adults in contact with secondary mental health services who live independently, with or without support	n/a	78.9	67.0	12.6		93.3
1I(1) - % of people who use services who reported that they had as much social contact as they would like	1080	45.8	43.9	29.7		54.4
1I(2) - Carers with as much social contact as they would like (placeholder)						
2A(1) - Permanent admissions of younger adults (aged 18 to 64) to residential and nursing care homes, per 100,000	10	13.1	13.5	44.8		3.6
2A(2) - Permanent admissions of older people (aged 65 and over) to residential and nursing care homes, per 100,000	215	736.0	673.0	1277.4		207.5
2B(1) - % 65 and over still at home 91 days after discharge from hospital into reablement/rehabilitation (effectiveness service)	325	85.8	85.2	58.9		100.0
2B(2) - % 65 and over still at home 91 days after discharge from hospital into reablement/rehabilitation (offered service)	430	5.6	3.1	0.6		25.8
2C(1) - Delayed transfers of care from hospital per 100,000 population	10	8.3	8.3	27.2		1.3
2C(2) - Delayed transfers of care from hospital which are attributable to adult social care per 100,000 population	6	4.1	2.2	13.7		0.3
3A - % overall satisfaction of people who use services with their care and support	n/a	62.5	64.7	45.5		83.7
3B - Carer satisfaction with social services (placeholder)						
3C - Carers included or consulted in decisions (placeholder)						
3D(1) - % of people who use services and carers who find it easy to find information about services	n/a	74.3	74.4	65.0		86.4
3D(2) Carers who find it easy to get information (placeholder)						
4A - % of people who use services who feel safe	n/a	73.2	66.0	54.7		81.8
4B - % of people who use services who say that those services have made them feel safe and secure	n/a	82.5	80.6	53.8		94.3